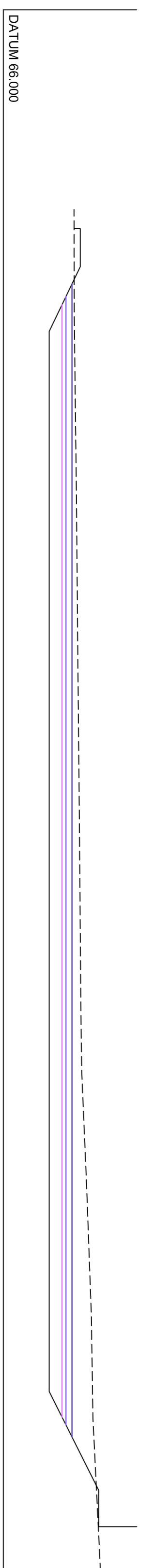
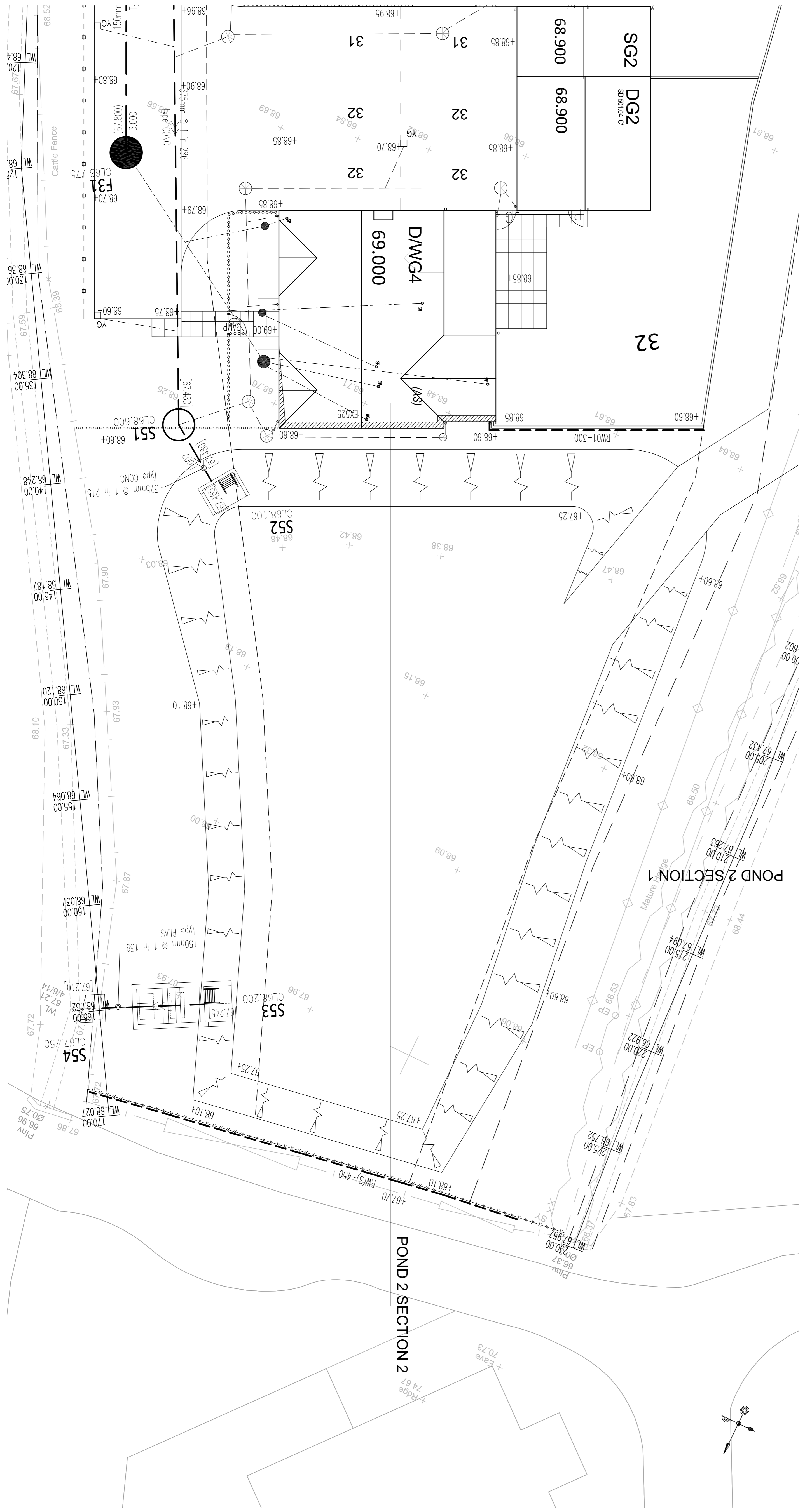


CHAINAGE	EXISTING GROUND LEVEL	PROPOSED GROUND LEVEL
0.000	68.476	67.25
1.421	68.104	67.25
2.000	68.287	67.25
4.000	68.420	67.25
6.000	68.354	67.25
8.000	68.283	67.25
10.000	68.211	67.25
12.000	68.139	67.25
14.000	68.087	67.25
16.000	68.067	67.25
18.000	68.047	67.25
20.000	68.027	67.25
22.000	68.007	67.25
24.000	67.987	67.25
26.000	67.960	67.25
28.000	67.912	67.25
30.000	67.874	67.25
32.000	67.851	67.25
34.000	67.826	67.25
36.000	67.800	67.25
38.000	67.774	67.25
40.000	67.748	67.25
42.000	67.722	67.25
44.000	67.696	67.25
46.000	67.670	67.25
48.000	67.644	67.25
50.000	67.618	67.25
52.000	67.592	67.25
54.000	67.566	67.25
56.000	67.540	67.25
58.000	67.514	67.25
60.000	67.488	67.25
62.000	67.462	67.25
64.000	67.436	67.25
66.000	67.410	67.25
68.000	67.384	67.25
70.000	67.358	67.25
72.000	67.332	67.25
74.000	67.306	67.25
76.000	67.280	67.25
78.000	67.254	67.25
80.000	67.228	67.25
82.000	67.202	67.25
84.000	67.176	67.25
86.000	67.150	67.25
88.000	67.124	67.25
90.000	67.098	67.25
92.000	67.072	67.25
94.000	67.046	67.25
96.000	67.020	67.25
98.000	66.994	67.25
100.000	66.968	67.25



CHAINAGE	EXISTING GROUND LEVEL	PROPOSED GROUND LEVEL
0.000	67.928	68.10
2.000	67.929	68.10
4.000	67.933	68.10
6.000	67.954	68.10
8.000	67.978	68.10
10.000	68.000	68.10
12.000	68.017	68.10
14.000	68.034	68.10
16.000	68.053	68.10
18.000	68.072	68.10
20.000	68.088	68.10
22.000	68.105	68.10
24.000	68.123	68.10
26.000	68.179	68.10
28.000	68.264	68.10
30.000	68.338	68.10
32.000	68.405	68.10
34.000	68.436	68.10
36.000	68.516	68.10
38.000	68.614	68.10
40.000	68.642	68.10
42.000	68.692	68.10
44.000	68.725	68.10
46.000	68.758	68.10
48.000	68.791	68.10
50.000	68.824	68.10
52.000	68.857	68.10
54.000	68.890	68.10
56.000	68.923	68.10
58.000	68.956	68.10
60.000	68.989	68.10
62.000	69.022	68.10
64.000	69.055	68.10
66.000	69.088	68.10
68.000	69.121	68.10
70.000	69.154	68.10
72.000	69.187	68.10
74.000	69.220	68.10
76.000	69.253	68.10
78.000	69.286	68.10
80.000	69.319	68.10
82.000	69.352	68.10
84.000	69.385	68.10
86.000	69.418	68.10
88.000	69.451	68.10
90.000	69.484	68.10
92.000	69.517	68.10
94.000	69.550	68.10
96.000	69.583	68.10
98.000	69.616	68.10
100.000	69.649	68.10



DO NOT SCALE FROM THIS DRAWING
 All dimensions to be checked on the paper to structure of proposed items. Any discrepancy or error shall be the responsibility of the contractor. The contractor shall be responsible for the accuracy of the information provided on this drawing. The contractor shall be responsible for the accuracy of the information provided on this drawing. The contractor shall be responsible for the accuracy of the information provided on this drawing.

Storm Water Levels
 1in 100 Yr - 30%
 1in 30 Yr
 1in 1 Yr

1. Refer to drawings:
 1223 for details of the inlet / outlet and control chamber.

REV DATE INITIAL

Newland HOMES

Collin Lane,
 Willersey
 Attenuation Pond 2
 Plan and Sections

1:100 @ A1
 Date 29.01.16
 Drawing No. 209 - 144 - 2

BJ
 29.01.16
 209 - 144 - 2