

MONDAYS KERBSIDE COLLECTIONS.

The next dates are **Mondays 7th & 21st October**

Please put bins and bags out by 7.00am. The Waste Hotline is 01285 623123.
https://www.cotswold.gov.uk/media/1709071/Your-Waste-Collection-Calendar_2019-1B.pdf Green bins for garden and food waste currently go out every week.

MOBILE LIBRARY SERVICE

<https://www.gloucestershire.gov.uk/libraries/find-a-library/mobile-library-service/>
For telephone queries 01452 425048 or 07795602325

WILLERSEY PARISH COUNCIL

The Office is situated at the south western corner of the Village Hall and is open for enquiries and advice on Monday each week from 9.30am-12noon (except Bank Holidays). At all times recorded messages can be left on the phone 01386 853635, or e-mail willerseyparishcouncil@btconnect.com

WILLERSEY VILLAGE HALL

To hire the hall please telephone Annie & Bill Payne 01386 858368, or email willerseyhall@btinternet.com Otherwise telephone Jean Harris 01386 858434.

METHODIST COMMUNITY ROOM HIRE – Tel: Penny Ingles 01386 853306.

The **MOBILE POST OFFICE** visits on Friday at The Bell Inn 12:45/14:45.
Only for Lloyds customers, their Mobile Bank visits Broadway Mon/Fri 13:30 to 15:15 and Wed 9:30 to 11:45. Not with Lloyds? – use Budgens Post Office.

COTSWOLD VOLUNTEERS NORTH

Anybody who wishes to have transport for hospital and medical appointments should ring the CVN Help Centre: 01608 651115. This telephone is manned from 09:30-13:30 hrs Monday to Friday. At other times there is an Answerphone.

Transport charges are 50p a mile (Minimum charge £3.00)

TRAVEL SERVICES TELEPHONE NUMBERS

| | | | |
|-------------------------|----------------|---------------------------|----------------|
| National Rail Enquiries | 08457 48 49 50 | or | 03457 48 49 50 |
| National Bus Traveline | 0871 2002233 | | |
| Hedgehog | 01386 841849 | N. N. Cresswell | 01386 48655 |
| Johnsons | 01564 797000 | | |
| Marchants of Cheltenham | 01242 257714 | Supplier will change from | |

Oct 27th. Gloucester County Council has no further information at September end.
Bus timetables for Gloucestershire are at www.easytraveling.org.uk/gcc/ and on the Willersey website at www.willersey.org/transport.htm#bus

Contact numbers for Breakdown of Services & Police

| | |
|---|---|
| Electric Power Faults - 0800 328 1111 or 105. | Gas Emergency – 0800 111 999 |
| Floodline – 0845 988 1188. | Severn Trent. Sewage – 08007 834444 |
| Thames Water - Water Supply – 0800 980 8800 | |
| Police – Telephone 101 | www.gloucestershire.police.uk Emergency 999. |

©Willersey & Saintbury Village News 2019

www.willersey.org

‘Let us run with perseverance the race that is set before us, looking to Jesus the pioneer and perfecter of our faith...’ Hebrews, chapter 12, verses 1-2 (NRSV)

One of my treasured possessions is a photograph that sits in my office of my Dad crossing the finish line of the 1988 London Marathon. He had run the race in 3 hours, 50 minutes and 45 seconds, which, to me, seems a remarkable – and unimaginable – achievement! In the photograph, Dad’s hand is raised in triumph as he crosses the line. I’ve talked to my Dad many times about the race. What was it like to run 26 miles, 385 yards? What were the highs and lows? How did he work through the lows? From Dad’s answer to my question, two words have stuck in my mind. He said, “It took a great deal of *dedication* and *perseverance* and I tried to keep my eye, metaphorically speaking, on the finish line.”

Those words – *dedication* and *perseverance* – brought to mind the words above from the New Testament book of Hebrews. There, the writer compares the journey of faith to a race and reminds us that this race – arguably the most important one of our lives – also requires *dedication* and *perseverance*, if we’re going to run it successfully and cross the finish line. *Dedication* and *perseverance* don’t seem all that important when the race is easy and going well. Then, we feel invincible and on top of the world. Nothing can stop us from achieving our goal and crossing the finish line!

However, one of the many parallels that we can draw between a physical race and the race of faith, is that there are times when both races are anything but straightforward. In a moment, the initial euphoria, energy and determination to succeed can vaporise. Suddenly, the terrain becomes rough, or seems to be all uphill. Instead of being at the front of the race, and being the pace-setters and encouragers of others, everyone appears to be overtaking us! The race of faith is no different, of course. The temptation then is to give up and suddenly, *dedication* and *perseverance* aren’t just important but imperative. They’re good skills to cultivate and they come through regular prayer and worship and through reading the Bible. That’s because doing these things enlarges our vision God and of his greatness. As our vision grows, so do our *determination* and *perseverance*.

There’s something else that we need to run the race of faith successfully. We need always, in the words from the book of Hebrews, to keep ‘...*looking to Jesus the pioneer and perfecter of our faith...*’ For Christians, Jesus is our

inspiration. His life-story is the ultimate example that life and faith aren't always easy. Jesus also reminds us that it is all worth the effort, though. After his death, resurrection and ascension, Jesus took his place in heaven at God's right hand. He promises to all who believe in him, however falteringly, that they, too, after they die, will be with him there for eternity.

In and through it all, through the easy and the difficult parts of the race, God is with us. May you have *dedication, perseverance and a vision of Jesus* that inspires you and spurs you on.

With love,

Scott
Rev Scott Watts
The Reverend Scott Watts, Rector, The Vicarage, Stratford Road,
Honeybourne, Evesham, WR11 7PP Tel: 01386 834946
revscottwatts@yahoo.com

Churchwarden Robert McNeil-Wilson, The Granary, Main Street
Tel: 01386 852785 & 07979590826 Email: rmw@unisonprojects.co.uk

Wildflower Meadow at Saint Nicholas' Churchyard

The PCC is to work with the Village School to establish a wildflower meadow in Saintbury Churchyard to promote insect and, particularly bee life. The open areas of the Churchyard will continue to be mown regularly and we will create a wildflower meadow on some of the churchyard land to the east and south of Saint Nicholas' Church.

Involving our school-children will engage them in an environmentally valuable initiative and enable them to study the outcomes as part of their current outdoor nature studies and contribute, e.g. by helping with the sowing and later the removal of undesirable weeds.

We invite everyone else who would like to take part in this exciting ecological initiative to contribute by paying £5 for their own bag of wildflower seeds and then sowing them in the churchyard in coordination with the project.

If you would like to take part, please contact Robert McNeil-Wilson (852785/07979590826), Bob Topp 858635 or a member of the PCC.

We enjoyed the Harvest Festival at St Peter's. Strange, we went out with the tune we sang only a couple of weeks ago at our Church! We're not so different are we? The lunch was good and we set out in good time to get to Worcester for another church service! Our first with South Worcestershire. The centre of Worcester (where St Andrew's is) was very noisy!! The bells of the cathedral were ringing – beautiful! But a pop group was also playing in the square, around Elgar! In the Church there was a band of 12 or so musicians playing all sorts of instruments and over 300 people. It was our first 'joined up' service with our new Circuit. We are now officially part of South Worcestershire. You will notice the new names in our list of service leaders. Do come and join in.

We remember a very interesting local preacher, Professor Ives, and found, only last week, that he wrote a book on 16th Century life, and was an authority on that period. We do have a lot of interesting local preachers with two lives – Church and 'other' interests.

Since our joint coffee morning for Christian Aid, we've had a meeting with Revd Scott, Gillian, and Rob regarding a new, smaller charity. We have decided, initially to raise money for a village in Sierra Leone, which has nothing! This will go through a lady from Stratford known to both Churches, who has been present with her 'sewn' goods at many coffee mornings and our Horticultural Show. You will be hearing more about it as time goes by.

This Friday, the knitters will be off to Bourton on the Water to meet our 'sister' knitters. We'll probably return with new ideas! And new enthusiasm!

Dates for your diary:- Last Croquet 2nd October.
November 9th QUIZ in the village hall with Bob and Pete. As numbers are restricted we shall be selling tickets this time. And in **anticipation**
Thank you to Bob and Pete.



Penny 853306 Busy bees

Broadway Embroidery Group

Our September meeting was a "Sit and Sew" with several members finishing their bee work with gold threads and beads. The display table revealed a wide variety of completed objects resulting in plenty of conversation and admiring comments.

We welcomed a new member to the group. Our main discussion was concerning the Christmas Tree Festival to be held in December.

Jean had worked a beautiful blue stocking in felt with festive embellishments for us to view. It was unanimously agreed to have stockings for one decoration and a heart shape was voted for the second. At our next meeting felt and templates will be provided. Please bring along sewing kits with festive embroidery threads and beads. There will be plenty of time to share..

Next month our meeting will be on Thursday 3rd October 10am to 1pm.
Broadway Methodist Hall.

For any queries please ring either
Penny Ingles on 01386 853306 or Gillian Beale on 01386 852958

The NOVEMBER 2019 CHURCH & VILLAGE NEWSLETTER

Copy for the November **News** must be received by Thursday 17th October unless otherwise notified. Please send in any items of interest or notice of forthcoming events. Newsletter creation will start early in the morning of the next day, the 18th. Drop them into Willersey Stores, phone Alan on 858601 or Bill on 858628, or preferably email them to willerseynews@gmail.com. Thank you. The Church and Village News is now published on the Internet no later than one week after the paper edition is delivered. You can find it at www.willersey.org/churchandvillagenews.htm

Comments on the Newsletter are always welcomed. Please email them to willerseynews@gmail.com or leave them at the Village Stores. The editors aim to make the Newsletter as correct as possible but errors may sadly slip in and we are also dependent on the accuracy of our contributors!

Saint Peter's Church – Fun Dog Show

Thank you to all the entrants, human and canine, to this year's Fun Dog Show at the Annual Horticultural Society Event. This year saw the return of the popular Fancy Dress competition as Class 1.

The show received invaluable and generous sponsorship from the following organisations: the **Cotswold Animal Therapy** with a special prize of a complimentary dog physio session, the **Mighty Bacchus Band** (appropriately sponsoring the Best Veteran), two classes sponsored by **Sue and Lou at our Bell Inn** and local contractor **SAL Electrical** sponsored the final class. K9 Capers provided the lovely rosettes for dogs placed and **Cotswold Raw** some doggy treats for all canine competitors.

This year's show raised £235.25 in aid of the Village Hall restoration project.

The **Horticultural Show** has donated to the following ; -

| | |
|-----------------------------|------|
| Willersey Village Hall Fund | £100 |
| Severn Free Wheelers | £550 |

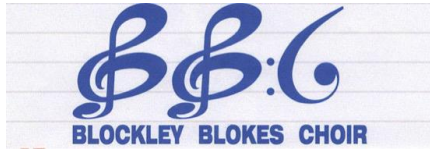
A huge thank you to everyone who supported the Show and the Committee for all their hard work. Bill Payne

Horticultural Show

I think the village should say a **Big Thank You** to Bill Payne and his Horticultural Committee for all their hard work in making "The Show" such a success. Jennie Bond.

Please email Pat Heming at office@heming-services.co.uk
As well as paper copies, the newsletter is also published on the internet.
www.willersey.org/churchandvillagenews.htm

North Cotswold Branch



A Concert in Willersey Village Hall

By the **Blockley Blokes Choir**, with a variety of songs that
'Blokes Sing'
supported by the **Willersey Hand Bell Ringers**,
with 'Hymns and Folk Songs' and much more

On Saturday 19th October at 7:30pm
all in aid of the Royal Air Forces Association Wings Appeal
Conductor; **Martin Dear**,
Piano and Organ by **Doreen Robinson**

Tickets £7, available at the Village Shop, Willersey
and the Information Centre, Chipping Campden
includes a glass of wine

The Male Voice Choir and Hand Bell Ringers of the North Cotswold



Patron: Her Majesty The Queen
Registered Charity 226686 (England & Wales). SC037673 (Scotland).

afterwards at the Golf Club. 3 hours: 6.5 miles
.Start: 10.00 am Quarry car park, just past the golf club. Off B4632
between Winchcombe and Prestbury. OS Map ref: SO 989 272.

Where the Windrush rushes – Tuesday 29th October - Moderate

Another in our informal series about how a parish fits into the wider
Cotswold environment, perhaps giving some answers about why this lovely
place is here and why it has developed the way it has. Bring suitable
refreshment. 3 hours: 6 miles.

Start: 10.00 am Temple Guiting village car park. OS Map ref: SP 089 278.

PLEASE use appropriate footwear as some walks may be steep and
muddy in places. EASY - Length may vary but terrain is mainly flat (level);
MODERATE - includes some hills and rough ground. STRENUOUS – may
be rough underfoot and ascents and descents may be steep. We welcome
guide and hearing dogs - sorry, others not allowed.

Walks are free although we do invite donations to help fund our conservation
and improvement work.

The Wardens run a full programme of guided walks throughout the
Cotswolds. For more information see www.cotswoldsaonb.org.uk or Tel:
01451 862000, also for any changes to arrangements such as due to
extreme weather.

WILLERSEY VILLAGE HALL

Management Committee Meeting

*There will be a Meeting of the Management Committee on
Tuesday `5 October 2019 at 7.00pm the Jubilee Room
Please let Secretary, Phil Bennett Tel: 01386 858695
know if unable to attend*

ANNUAL GENERAL MEETING

*The Village Hall Annual General Meeting will take place
At 8.00pm after the Committee Meeting. Anyone interested
and would like to know more about the Hall is welcome to attend.*

**LOCAL WALKS WITH THE
COTSWOLDS VOLUNTARY WARDENS
October 2019**



Three Rivers, three villages around Bourton-on-the-water – Tuesday 8th October - Moderate

Countryside and across three rivers in this circular of the villages, starting at and around Bourton on the Water. Wyck Rissington - Lower Slaughter - Upper Slaughter - and back to Bourton. 4.5 hours: 7.5 miles.

Start: 9.30 am Bourton-on-the-Water war memorial. OS Map ref: SP 167 207.

Windrush, Wardens Way Circular – Walk 3 – Thursday 10th October - Moderate

The third in a series of four circular walks encompassing the Windrush and Wardens Way. This walk takes us out on the Windrush Way to the medieval village of Hawling before returning on the Wardens Way through Guiting Wood. Please bring a packed lunch. 4.5 hours: 8 miles.

Start: 10.00 am Guiting Power village car park (donation). OS Map ref: SP 095 246.

Stanway Watermill and Tures – Thursday 17th October - Moderate

A varied walk exploring Stanway Estate, looking at how water is used and managed, including a visit to the working flour mill (admission charge £3). Climbing up through woods, we will see a restored ture and how the famous fountain gets its supply of water. Return to Stanton via Shenberrow Hill. 4 hours: 5.5 miles.

Start: 9.30 am Stanton village car park, next to cricket ground. OS Map ref: SP 067 344.

A Circuit of Cleeve Common – Wednesday 23rd October - Moderate

A walk around the edges of Cleeve Common, visiting an ancient sheep wash, abandoned quarries and the highest point in the Cotswolds. One short challenging, climb then mainly level. Lunch and drinks available



Willersey WI September Report

We opened with much chatter and meeting and greeting after our summer break.

Our best wishes go to Mary Smith who is in hospital in Cyprus. We wish her a speedy recovery and look forward to her energy and enthusiasm back in Willersey.

Mal read the thank you card from St Peter's Church for the contribution to the Wedding Theme at the Patronal Festival in June. Clearly a great success. Sue has captured the scene with a good selection of photographs for our photographic records. She's making an outstanding job of keeping track of our events highlighting what busy bees we are.

With our successful run of fund raising over the last few weeks we are able to send £400 to 'Helping Hands' in Evesham and top up the 'Seniors' Christmas Lunch fund.

We have retained some funds for a Christmas wreath making workshop for members.

Jackie, our feisty fund raiser, has sent £70 to the Cobalt Unit from card sales and coin collections; and she is now organising a 'Wear It Pink' Day, to support breast cancer care, which is to be held in the Bell on the 18th October. There will be fundraising activities, a cash prize for the raffle and Sue and Lou at the pub are generously donating £5 for each lunch we purchase. Sue and Lou's community spirit has to be mentioned, having already donated a meal for two to the Macmillan Coffee Morning in September. How lucky to have their support.

Many ladies have signed up to visit John Lewis in Cheltenham for a Christmas shopping evening following their successful summer event.

Mary Pawsey gave an informative talk on ladies support garments. We didn't realise the complex construction and detail that went into the humble bra. She gave some helpful feedback to individuals and some ladies left with some bargains.

Our next talk in October will appeal to a wide audience: 'A Craftsman's View - Gordon Russell'. So please share the date with those creative types

OCTOBER MEETING

October 13th - Village Hall 7.15

'A Craftsman's View - Gordon Russell' - Martin Blakeman

An open meeting - £4 for guests

Tea Hostesses - Lynne & Lizzie

Birthday Flowers - Jackie - 2 Raffle - Mal

WI Crockery Hire call Mal 858351

WILLERSEY is WEARING IT PINK for Breast Cancer

Friday 18th October - between 12 and 3 pm

THE BELL INN

Lots of fun and games,



Cakes

Pink Quiz

Pink Tombola

An amazing £100 Raffle

LUNCH



£11.99 with £5.00 from every lunch going to Breast Cancer care.

Tickets only, contact the Bell Inn or Jackie Jordan 01386852678.

Wear it pink prize for best effort!

Come as you are, coffee available.

Donations will be gratefully received,

No raffle prizes but cash towards £100 would be great.



Pink Tombola prizes please.



Cakes

Many thanks, Jackie Jordan on behalf of Willersey Wear it Pink team.

HOPE TO SEE YOU THERE, please come and support this charity.

Thank you so much.

Signpost Broadway AGM to be held at the
Broadway United Reform Church on
Monday, 11th November at 7 pm. All Welcome.

Helen Rushmore Chair
Signpost Broadway Mobile: 07974 766269

15

New launch date for improved Waste Service

Cotswold District Council's increased waste collection service will include:

- Separate food and garden waste collection
- Weekly food waste collection
- Fortnightly garden waste service
- Fortnightly dry recycling collection
- Fortnightly refuse collection
- More materials recycled at the kerbside (small electricals, textiles, batteries)
- New recycling sacks for cardboard and additional larger food waste caddies

The new service will begin at the end of March 2020.

A successful launch in November was endangered by a number of issues - particularly that new vehicles would not be delivered and ready in time.

The new service will bring some big improvements to CDC's waste collection and recycling. It will be more environmentally friendly and allow residents to recycle more than ever before.

Sarah Black Communications Officer Tel: 01594 812619
sarah.black@publicagroup.uk



"So really, it is very easy to understand how Brexit will affect our parish..."

Harvest Festival Word Search

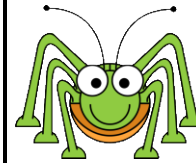
| | | | | | | | | | | | |
|---|---|---|---|---|---|---|---|---|---|---|---|
| D | U | M | N | R | O | C | M | O | N | D | R |
| S | N | A | E | E | S | I | A | R | P | C | P |
| E | K | T | T | A | S | E | R | I | R | L | N |
| P | A | C | F | G | D | R | R | C | D | A | N |
| W | U | H | O | S | N | O | O | H | O | O | W |
| O | D | M | S | L | N | I | W | E | O | V | B |
| C | R | O | P | S | F | H | S | S | F | E | S |
| A | K | E | T | K | E | K | N | S | L | R | E |
| R | R | R | R | A | I | N | S | R | E | F | A |
| E | A | O | T | H | A | N | K | F | U | L | M |
| C | G | O | O | D | N | E | S | S | S | O | B |
| D | E | C | N | A | D | N | U | B | A | W | N |

| | | | |
|----------|-----------|----------|--------|
| Corn | Abundance | Marrows | Carts |
| Praise | Goodness | Rain | Water |
| Soften | Care | Mud | Riches |
| Thankful | Crops | Blessing | |
| Pumpkins | Wheat | Food | |
| Overflow | Meadows | Flocks | |

K.S.

Our local Police and Crime Commissioner is required to produce an annual report reflecting how he has carried out his responsibilities over the past 12 months and progress in delivering the Police and Crime Plan. Here is a link to it : <https://www.gloucestershire-pcc.gov.uk/reports/> Hard copies are also available from the OPCC at ppc@gloucestershire.pnn.police.uk

2019 marks the 175th anniversary of Willersey School. We will be celebrating later in this term, so if you –or someone you know –have any memories or memorabilia that you would like to share as part of the celebration, please let us know!



Nature Box

What's at the Bottom of the Garden

Our wildlife is in trouble, but a small celebration of some of what has been seen in Willersey this summer is not out of place.

Second broods of swallows and house martins reported; fledgling little owls have been seen; a pair of kestrels have bred successfully; and a green woodpecker family spotted. As many as 40 swifts graced the village skies in July with at least four nesting sites noted, so hopefully breeding success here too.

There have been ducklings on our pond, with the semi resident heron seemingly content to fill up on small fry. A swimming grass snake in a garden pond has caught the eye. Fox cubs and leverets have been spotted; and although seemingly much reduced in number hedgehogs have be recorded.

Butterflies continue to struggle, but locally this year seems to have seen something of an improvement with lots of whites, gatekeepers and meadow browns; with a scattering of peacocks, red admirals, comma butterflies, and a few painted ladies that migrate to and from north Africa. An exotic humming-bird hawk moth and an elephant hawk moth were also observed.

Yes, it's surprising what's at the bottom of our gardens.

And, while most of us aren't looking winter migrant fieldfare and redwing will be adding to Willersey wildlife.

If you'd like to comment or contribute to Nature Box or report interesting local sightings please email Bob Topp at willerseynaturebox@gmail.com

Weston Rural cinema: October

Our October film continues the musical theme of several recent months. **ROCKETMAN** tells the story of how a small-town boy became one of the most iconic figures in pop culture.

It is an epic musical fantasy about the incredible human story of Elton John's breakthrough years. The film, accompanied by many of his most beloved songs written with long time lyricist and writing partner, Bernie Taupin, follows his transformation from shy piano prodigy Reginald Dwight into international superstar Elton John.

The film will be shown in Weston-sub-Edge Village Hall on Thursday 31st October. Doors will open at 7.30 p.m. and the film begins at 8.00 p.m. Tickets are £4.00 at the door. For more information contact Chris Rossington on 01386 849316 or find details on the village website, www.westonsubedge.com. New faces are always welcome.

The Village Bar will be open from 4.00 p.m. for a pre-cinema supper. Becky serves excellent food at very competitive prices. For more details contact becci.white@btinternet.com or drop into the bar one weekend and collect a menu.

Weston-sub-Edge Village Hall

Regular activities include:

| | | |
|------------------------|---|---|
| Seniors coffee morning | – | second Monday of every month at 10.30 a.m. |
| Keep Fit | – | Mondays at 4.00 p.m. |
| Pilates | – | Tuesdays at 12.45 p.m. |
| Yoga | – | Tuesdays at 6.45 p.m. |
| Zumba | – | Wednesdays at 6.15 p.m. |
| Auction | – | currently the first and third Fridays of the month at 6.00 p.m. |

The hall offers a Children's Party package for £30 for 4 hours on Saturday and Sunday mornings and afternoons. Catering can be arranged through the Village Bar.

Christmas party slots are also beginning to fill up so, if you are interested, please don't leave it too late.

For more information about the hall visit the village website, www.westonsubedge.com. To discuss the potential for a regular booking, to arrange to view the hall or to make a one-off booking contact Chris Rossington on 01386 849316.

St. Peter's PCC Meeting Report

Some key points of interest from the most recent meeting of Saint Peter's PCC were:

The PCC welcomed Rachael Barker to her role as PCC Safeguarding Officer. The meeting agreed that every member of the PCC should undergo safeguarding training and DBS assessment.

The PCC noted with pleasure that four babies will have been baptised at Saint Peter's in the months of August and September.

Work is continuing between RMW and Neville Jelfs, as the Parish Council's representative, and Adam Kelly, on behalf of the tenant of Court Close to identify a suitable area of land on Court Close for the extension of the cemetery.

The Meeting endorsed SW's proposal that he seek funding from the Willersey with Saintbury Charitable Trust for a data projector, screen and broadband connection in the church for school services.

The PCC agreed that, when the Village Hall is closed for upgrade works that Saint Peter's Church be made available for meetings/events/activities that are appropriate with the fees going to the Village Hall as usual to contribute to the restoration works.

WILLERSEY WEDNESDAY CLUB

We met again, after our summer break, on 11th September for the Annual General Meeting. The Chairman reported on the past year and the committee for the coming year was elected.

We were then entertained by Phoebe Appleby who sang songs from old Musical Shows that we all knew and loved.

Our speaker on 9th October is Jan Long who will talk on "Working for the British Council", and on 23rd October, David Chatterley on "Victorian Brass Needle Cases."

Visitors are very welcome to our meetings.

St Peter's Family Service and Harvest Lunch September 15th

We plough the fields and scatter a good hymn to start our Harvest Festival Service taken by Father Kevin. The Church was beautifully decorated by the Flower Group and was really enjoyed by the congregation.

We were joined by our friends from the Methodist Church. Richard read the lesson for us and Pat & Ken took the prayers. A poem was read describing Autumn. Poppy as always took the collection for us. The produce that was brought to the Service was taken to Caring Hands in Evesham by Ken. Bel and Bill were busy with welcoming us and serving coffee for those not staying for lunch.

This was a new venture serving the Harvest Lunch in Church but it was very successful. There were 30 of us who sat down to eat with lots of laughter and chat. Something to think about for the future. We raised £75 towards Church funds. Thank you to everyone who helped or provided puddings and other bits and pieces for this lunch.

Our next Family Service is on October 20th at 11 o'clock in St Peter's Church. We hope to see you there.

Ed: A big "Thank You" to Jennie and her helpers.

"In 2012 about 56 million people died throughout the world; of these 620,000 of them died due to human violence (war killed 120,000 people, and crime killed another 500,000). In contrast, 800,000 committed suicide, and 1.5 million died of diabetes. Sugar is now more dangerous than gunpowder."

— Yuval Noah Harari, Homo Deus: A Brief History of Tomorrow

MACMILLAN COFFEE MORNING

Saturday September 21st

A huge thank you to anyone who bought a cup of coffee, a cake, or risked their life savings on any of the raffles. It was a good day to catch up and chat; and especially important to think of the friends and neighbours who have needed the support of The Macmillan Cancer Team. Willersey raised the outstanding sum of £ 1,113

Well done Jean Smith for keeping us in order.



Autumn Clean of St Peter's Church

Dusters and mops at the ready! Please join a band of helpers to clean and polish our Church on SATURDAY 19TH OCTOBER from 10:00 am. Around 12:30 pm everyone is welcome to stay and enjoy a well-deserved soup lunch. Hot drinks we available throughout the morning.

Weather permitting it would be good to clear the car park of the weeds which have invaded the space.

There is plenty of polish, dusters and brooms for everyone's use. Thank you

See you on 19th October.

ST. PETER'S CHURCH October 2019

N.B. Holy Communion using the Book of Common Prayer (BCP) service is celebrated every Wednesday at 11am. Do come along and join us for the service and/or coffee and a chat at 11.30-12.00 noon.

Sidesman, Readers and Coffee Rota for October 2019

| Date | Sidesman | Reader | Refreshments |
|--|--------------------------------|----------------------------|--------------------------------------|
| October 6th Trinity 16 | Ken Spensley Morning Prayer | Pat Heming | Pat Heming & Rachael Barker |
| October 13th Trinity 17 | David Kelley HC TL | David Kelley | Peter Burch & Liz Webb |
| October 20th Trinity 18 | Bel & Bill Jabelman | F.A.S.T. 11:00am | Family Service. F.A.S.T. Team |
| October 27th Last Sunday After Trinity | Tim Prestage HC ML | Tim Prestage | Sandra Spensley & Sylvia Schambri |
| November 3rd 4th Sunday before Advent | Morning Prayer | | |

Please check with the week sheet that there is no change to the lessons. If you are unable to do your duty please arrange a swap.

If you need to swap please contact someone to take your place.

HC Holy Communion TL Traditional Language
ML Modern Language CW Eucharist

All services start at **9:00am unless otherwise noted.**

Please check for changes/additions on the weekly sheet.

North Cotswold University of the Third Age Open Meeting

Thursday Oct 10th Open Meeting in Willersey Village Hall.
2:00pm start. Finish usually 4:00pm. Donation of £2 per person.

Hatches, Matches and Despatches – Fiona Rhodes.

Stories from a Civil Celebrant and Registrar of Births, Deaths and Marriages

<https://u3asites.org.uk/north-cotswold/events>

METHODIST CHURCH SERVICES for OCTOBER 2019

Please come and join us.

All services are at 10.30 am with coffee afterwards.

6th October Anne Yelland
13th October Steve Barritt
22nd October Revd Helen Caine – Unites Service
 at Broadway Methodists

27th October Robert Gillard
There is a Church Meeting on October 22nd at 2.30 pm if you would like to come along. You would be very welcome.

| Date | St Peter's Lessons |
|--------------------------------|---|
| October 6th | Lamentations 1 v 1-6 & 2Timothy 1 v1-14 |
| October 13th | Jeremiah 29 v 1, 4-7 & 2Timothy 2 v 8-15 |
| October 20th | Family Service |
| October 27th | Joel 2 v 23-end & 2Timothy 4 v 6-8, 16-18 |

Week Ending

October 5th or 12th
October 19th

Week Ending

October 5th or 12th
October 19th

St Peter's Church Cleaning

Sandra and Ken Spensley
Autumn Clean

St Peter's Brass Cleaning

Gillian Beale
Autumn Clean

Thank you to everyone who help with St Peter's Cleaning
Please choose either week to do your cleaning. The cleaning cupboard in the vestry.

A vestry key is in the Bell Inn or from Mrs Gillian Beale (01386 852958.) If you feel you could spare an hour or two to help clean our Church, please get in touch. It would be great to have more helpers on the rota. Please let me know if cleaning materials are getting low so I can replenish - Gillian.

The marriage of Robert Charles Tacon Coldicott & Rebecca Susan Couch will take place in St Peters' Church on 10th October.