

PASTORAL LETTER – MARCH 2023

To boldly go

For some people the split infinitive in the starship Enterprise's mission "to boldly go" forever marred Star Trek. It's interesting, the things that can irk and provoke; Mother's Day or Mothering Sunday? The Isles of Silly or the Silly Isles? Let's not get started on who we vote for, whether we were right to choose Brexit or whether it's good to be woke.

People seem to argue all the time they readily fall into arguments about the most trivial things. The gloves quickly come off when someone's opinion or narrative is challenged – discussions soon become personal - spats too often descend into real unpleasantness. Sadly, relationships can be fractured or broken because people hold different views.

And of course, not everything is trivial some things really matter: standards in public life; the right to justice; the protection of the vulnerable; the care of our fragile planet - somethings really matter. The church is not immune from heated discussions and relational fracture as last month's General Synod demonstrated when human sexuality and the relationships that the church blesses were discussed. People seldom agree on everything – to be human is to learn to live with disagreement. The challenge is to disagree well, to listen to those with whom we disagree; to love those who think differently and hold different opinions to us.

None of this is to down play the importance of truth. We follow Jesus who proclaimed, "I am the way, and the truth, and the life" (John 14:6). It's noteworthy that being right is not one of the fruits of the Spirit. Jesus is right and true, but the fruits of the Spirit listed by St Paul as the characteristics of Jesus' followers are love, joy, peace, patience, kindness, generosity, faithfulness, gentleness and self-control (Galatians 5:22-23). How can we live so that we manifest these attributes in our pursuit of truth and in our conversations and interactions with others? This is a good question to ask ourselves this Lent – how can we draw closer to Jesus so that we mirror his love more graciously?

In some translations "patience" is translated "forbearance". Patience often implies a passive response. We wait in the face of boredom; we endure suffering, difficulty, pain and annoyance. Forbearance seems more active, restraint in the face of difficult people, it connects patience and self-control. Someone with forbearance suffers fools gladly, because, well, why let someone else's foolishness interfere or impede their gladness?

We try to be more patient with others for we are encouraged to exercise forbearance. As Jesus' followers we endeavour to listen more than we speak, we seek to learn, to understand the viewpoints of others, we build friendships with those you think differently to us. In doing these things we are sharing the Father's love; who loves us not because we are right but because we are His children.

This month, this Lent go gently, practice patience. exercise forbearance.
and may the truth of God's love for you grow in your heart.
Every blessing
Revd Craig

Team Vicar Appointment

Dear all,

It has been agreed that we can move forward with the appointment of a Team Vicar to fill the vacancy left by Revd Scott Watt's departure. This new appointment would be for a Team Vicar to work with the parishes of Dorsington, Honeybourne, Pebworth and Willersey. I am hopeful someone could be appointed before the summer. This will have implications for the oversight of other parishes within the Team although the exact pattern has yet to be decided.

This heralds a new chapter for the Vale and Cotswold Edge team. Please hold all of the parishes in the VaCE team in your prayers. Please also pray that the right candidate might be

[Type here]

appointed to this role so that the good news of Jesus can be shared and all our churches and parishes can prosper.

Thank you for your support and prayers
Every blessing
Craig

Craig Bishop Team Rector – based in Chipping Campden
Tel: 01386 841927

Churchwarden Robert McNeil-Wilson,
The Granary, Main Street, Willersey Tel: 01386 852785
mobile 07979590826 Email: rmw@unisonprojects.co.uk



WILLERSEY FOOTLIGHTS



On page 8 you will find full details of our forthcoming show at the end of the month. Footlights have been active in the village since the 1980s and in doing so have raised many thousands of pounds for charitable and worthy causes. Do come along book your tickets but don't delay, the Hall has limited capacity and there are 88 more houses in the village since we last performed (pre Covid).

There will be a bar - don't forget to bring cash - and a raffle for which we would appreciate donations (**please contact Mal on 01386 858351**).

You will enjoy!!

Multi Topic Quiz – Part 6

Music

1. Thomas Arne wrote which famous song, usually sung at the Last Night of the Proms?
2. Who won the most “Grammy Awards” in the 1980’s?
3. Who was “The Queen of Soul”?
4. Who wrote the music for “Top Hat” with Fred Astaire & Ginger Rodgers?
5. Which song (fittingly) became Elvis Presley’s first posthumous UK number-one?

Sounds the Same (2 words in each answer)

1. Remained respectable!
2. Something in a computer to get your teeth into!
3. This would leave a bitter taste in the mouth of an old Frenchman!
4. Would you need to rotate to play this part?
5. Would you see a leading dignitary riding one of these?

Sport

1. Who lit the Olympic flame at Atlanta in 1996?
2. Who opposed the US in the Ryder Cup between 1973 to 1977?
3. Why did Lester Piggott never ride the same horse in two consecutive Derby’s?
4. Why didn’t the great horse Arkle go to Stud?
5. What was unusual about the 1912 Boat Race?

Please see page 16 for the answers

[Type here]

Willersey Friends of School News



We are very excited to announce our upcoming event of prize Bingo on the 25th of March, the tickets are now on sale.

We will be selling snack food such as pizza, sausage rolls and soft drinks please "bring a bottle" if you prefer something a little stronger.

We will be having a cash flyer game at the end of the night but for the adults only.

Willersey Village Hall - Saturday 25th March

Doors open 6 p.m. Eyes down 6.30 p.m'

Adults £12/ Children £1

Pay for tickets at the door.

Book online: WWW.TICKETSOURCE.CO.UK/FOSWILLERSEY

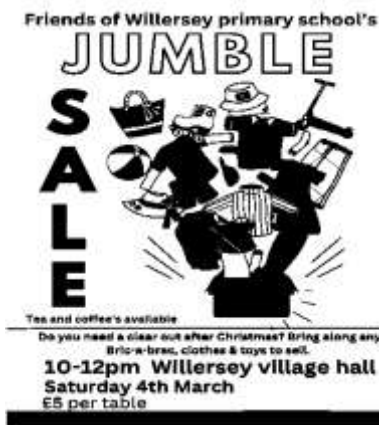
Children under 18 must be accompanied by an adult.



Raise Funds by collecting Re-usable Clothes

We will be having another rags to riches collection on the Wednesday 8th February. If you have any

unwanted clothes or shoes in good condition, please leave them bagged outside of school in the morning of collection. Unfortunately we have no space to store bags.



We have also have an upcoming jumble sale in the village hall on the Saturday 4th of March 10-12pm. If you would like a table for £5 please contact us by email: em willerseyfos@gmail.com We would love the village's support for our event. (Sadly cancelled)

Sudoku

2		3	6		8			
	4			2		8		3
8		1		4		6		
	6	5			7		4	9
3								1
7	9		1			3	5	
		8		5		1		6
5		9		1			3	
			4		9	5		2



WILLERSEY FOOTLIGHTS



THE APRIL 2023 VILLAGE NEWS

Copy for the April news must be received by Friday 17th March 2023 unless otherwise notified. Please send in any items of interest, thanks or notice of forthcoming events.

Newsletter completion will start early the next day. Email them to willerseynews@gmail.com or phone Alan 858601 or Bill 858628, Thank you.

The Church and Village News is now published on the Internet. It is at. www.willersey.org/churchandvillagenews.htm

PRESENTS



No remote (it is in the 'Repair Shop') so you can't switch us off

'Footlights' present an amusing take of some of our regular TV shows with lots of music

Willersey Village Hall

**Friday March 31st and Saturday 1st April
At 7.30 p.m.**

Tickets - Adults £10, Children (U 16) £6 from:

**Alan Gittings
01386 858601
07734363670**

**The Garage
01386 852338**

**The Bell Inn
01386 858405**

Pay Bar (Cash only)

Raffle

Proceeds to Charity

Thank you to our advertisers who support the Willersey News. If you wish to advertise in our magazine please contact Alan Gittings on 01386 858601 or email agittings@talk21.com .

When visiting our advertisers please mention that you read their advertisement in the Willersey News.

The Mobile Post Office

is outside the Bell Inn every Friday from 12:45 to 14:45.

You can do everything there –Vehicle Licenses, Pensions, Cheques in, Stamps, Cash in and out, and much more. The staff are very helpful.

Parking outside is very easy and has no restrictions

Wine Appreciation



If you are interested in being part of a monthly wine appreciation / tasting group please contact Sandra at:

willerseywine@btinternet.com

*What though youth gave love and roses
Age still leaves us friends and wine*

Thomas Moore



Dambusters Raid 80th Anniversary Commemorative Event

On **Tuesday 16 May**, it will be eighty years since the Dambusters of 617 Squadron took off in their Lancaster bombers on their heroic endeavour to breach the great dams of Germany. Their Second in Command was Squadron Leader Henry Maudslay of Willersey.

At 7pm on that evening, there will be a commemorative event in the Village Hall as a tribute to all three young, Willersey men who gave their lives, as Lancaster bomber crew, in the service of their country;

Anthony Kyall, Edgar Proctor and Henry Maudslay.

More information in next month's Church & Village News.



One of the many positive feedback comments we are getting at the Wednesday Club includes that we have so much variety and interesting subjects presented at our meetings, that they are a lot of fun. So we thought it best to share some of our upcoming meeting subjects, just to keep everyone informed of what we have going on.

Meeting dates;

March 1st; Conundrum Quiz - you have to be there to find out what this is about!

March 15th Harvington Ukelele Band

March 29th Making Easter Bonnets

April 12th Gloucester and Warwickshire Steam Railway - a presentation

April 26th Fun Quiz meet

May 10th Coronation band performance (watch this space)

Remember, everyone over 55 is welcome to come along and find out what we are all about. We meet every other Wednesday afternoon at the Willersey Village Hall. The meeting starts promptly at 2.30pm so we suggest you might plan to arrive by 2.20pm. After the presentation and meeting, we have a variety of teas/coffee, sandwiches, cakes and - a good chance to meet others in the community and just socialise. Anyone from the local villages to Willersey is welcome to come along and join us. See you there.

Saint Peter's Church Services, March 2023

5 March Lent 2	10.00 am Morning Prayer (Modern language)
12 March Lent 3	9.00 Holy Communion Book of Common Prayer
19 March Mothering Sunday	11.00 All Age Worship
26 March Lent 5/ Passion Sunday	10.00 Morning Prayer (Modern language)

Mid-week Holy Communion (BCP): At Saint Peter's, every Wednesday at 11:00 am.

Sunday, Evensong: at Saint Andrew's, Aston sub Edge on Sunday's 12 & 19 March.

Your Church is open for you every day.

Church Spring Clean

I can't believe it is that time of year again, well it is, and guess what '**Spring Clean**' time at Church. If you are able to come and help the date is 25th March at 10 o'clock.

Your reward is soup and cheese board at lunchtime. Please come and join us. -----

All Age Worship

Our thoughts for this month's service were based on "**Love Is**", Mark took the service, all our hymns had reminders to us to love one another and help one another. There were 3 readings, one was the 'Good Samaritan' and Mark's tack was based on this. It was lovely to see so many of you there, families included. Thank you to Ian, Rob and Carolynne for our readings and to the many hands serving coffee and biscuits and also washing up. Many hands as the saying goes. So, I will leave you with this thought, " my commend is this ; Love each other as I have loved you". See you next month, celebrating Mother's Day.

St Patrick's Day Mothering Sunday Annunciation Lent

Leeks for St David's day, daffodils for the rest of the month: March brings us Spring. St Patrick, who brought Christianity to Ireland, is remembered with parades. Mothering Sunday and Mother's Day are celebrated with more daffodils and Sunday lunch 'out'. March brings us the Annunciation, when the angel first appeared to Mary to tell her of her coming pregnancy. March is the month of Lent, of prayer and preparation for Easter.

Wordsearch



Leeks, Daffodils, Spring, Patrick Day, Mum, Mother, Angel, Ireland, Wales, Sunday, Lunch, Pregnancy, preparation, Prayer, parades, Mary, Magnificat, Fasting, Lent.
Ken S



Nature Box 'Best Bib and Tucker'

'He scrubs up alright'. Well right now that is just what many of our male birds are hoping to hear, to cement a relationship after some serious courtship over recent weeks. Many birds form new partnerships each spring, and females, rightly so, are pretty choosy when looking for a partner. He needs to be a good, healthy prospect and successful in finding and maintaining a territory and food to try to ensure the best offspring.

The quality and sometimes repertoire of song is one good indicator, along with bright coloured breeding plumage, and in some instances, like the swallow, the length of tail.

Interestingly, successful males may find more than one mate; although such behaviour is not confined solely to males. Females can often be pretty picky in some instances, with male wrens for example often building a number of nests before she selects one. Given that many garden birds may not see a second spring courtship and successful breeding is arguably the most important time of the year. Breeding and raising a brood of youngsters is no small task, so it's not surprising that birds often look pretty dishevelled at the end of the breeding season in early summer and need a few weeks to recuperate and grow new feathers.

Although many birds will have been looking and competing for possible nesting sites for some time, it is still not too late to pop up a nest box. As mentioned before, blue tits and great tits most regularly use nest boxes, so choose a bird box with a 25mm or 28mm sized hole, and place the box facing north or north west if possible, away from any bird feeder and with a clear flight path to the nest box.

And then cross your fingers.

13

February Bird Song – Great Tits

Great tits are early nesters and right now we can hear males, with their broader black breast stripe, giving out their loud 'teacher, teacher, teacher' call across our gardens.

Bob Topp

'ISingPOP' Concerts in Saint Peter's

Willersey School children will perform two 'IsSingPOP' concerts in St Peter's Church, on Tuesday 7 March. The performances are at 2pm and 6pm and everyone from the Parish is welcome.

ISingPOP is an organisation that will train the children in singing and performing pop songs and will lead their rehearsals for the concerts. The shows feature a set of fun, catchy pop songs, each based on an important, Christian value. The training and performances are all sponsored by Saint Peter's Church and the Friends of Willersey School.

No tickets are required. Entry is free for all the School, parents, family, carers, friends and all parishioners, although donations will be received, gratefully, for youth and children's activities in the summer holidays.

Come and enjoy:

ISingPOP

performed by Willersey School Pupils
at Saint Peter's Church
2pm or 6pm
Tuesday, 7 March

Willersey WI News March 2023

Who isn't familiar with the Willersey stalwart that is Disco Dave? Famous for his quick sense of humour, ambitious quiz nights, compere skills, karaoke and of course his discos. He's an entertainment legend in the village.

He brought the same cracking energy to our WI meeting on February 13th where he shared stories of his working life at Jaguar Land Rover and, unsurprisingly, he was captivating and very, very funny.

He left school at sixteen with one O-level, completed an apprenticeship and worked his way up to Jaguar Land Rover Events Manager many years later. With this came the opportunity to travel the world extensively, including a stint of living in Dubai for three years with his endlessly supportive wife Maureen and their sons.

Disco Dave is a skilled storyteller – and we really did love hearing about his fascinating life, hard work and devotion to his beloved vehicles. Thanks again, Dave.

The members postponed centenary meal was held at the end of January in the Village Hall, prepared and served by Susie and helpers. With a special toast, great food, good company and a little wine (and Pam's hip flask) it felt like a really memorable way to celebrate such a significant event. Members were all gifted a beautiful engraved pen to mark the occasion.

We were delighted to donate £100 to Willersey School towards their arts and crafts where our own Maggie Topp will be rolling up her sleeves and lending a hand. **15**

At the **Spring Fling** in the village hall on the **15th of April** the WI will have a charity Bric-a-brac table. Any donations gratefully received – please call Mal on 01386 838351

Our project from last year when we made Property Bags for the 'End of Life' Team at Gloucester Hospital had a write-up and photo in the WI Gloucestershire magazine. Watch this space for details on when the next bag making session will be.

Multi Topic Quiz – Part 6 – Answers

Music

1. "Rule Britannia"
2. Michael Jackson
3. Aretha Franklin
4. Irving Berlin
5. "Way Down"

Sounds the Same

1. Stayed / Staid
2. Byte / Bite
3. Gall / Gaul
4. Roll / Role
5. Mayor / Mare

Sport

1. Muhammed Ali
 2. Great Britain & Ireland
 3. Horses only run in the Derby once
 4. He was gelded
 5. Both teams sank.
-

METHODIST CHURCH NEWS

PAST AND UPCOMING!

Sorry I missed last month! I pressed the wrong button instead of SEND!! That's what a stroke does to you. I'm so sorry if you were looking forward to a really nice new year letter!!

Thinking of which the world is a mess isn't it? Please remember that Ukraine is still under great pressure as well as the earthquake in Turkey and Syria. We're happy to take warm bedding and clothes to the North Cotswold Rotary Club if you have any! They will pass it on to the appropriate place. We are also still knitting for the premature babies, (hats, etc) and passing on what we can to whoever we can! Please support us on this. We're trying to be a small siphon into a big container!!

Our Church is fine and we're getting into our routine now. We've just been able to have the Church Windows cleaned! What an excitement! I don't think they've seen the light since they were double glazed! And to watch the cobwebs and spiders having their way with them has been quite distressing!! Thank you to the donors who helped with the funds.

While on this topic there is information available at Signpost if you need it for help with advice. Age Concern has regular appointments in Broadway at the Signpost Office and Citizen's Advice and Local Authorities all have information (they too can be reached through Signpost). If you're around the Co-op, Broadway, just look on the door of the first office on the right when you go into the shopping car park and you'll find out when Signpost is open.

The daffodils are budding up and the bright yellow has bloomed and is just beginning to burst. We did the bird watch and the wretched things had clubbed together to avoid our garden and only fly over!! However ...it's good to take the time to sit and think isn't it!

Have a good spring!

Penny (Ingles) 853306



Willersey's Big Garden Bird Watch

Firstly a big thank you to the 54 people who gave up an hour of a recent weekend to take part in this year's Big Garden Bird Watch, creating an opportunity to compare our village bird sightings with results from 2022. Even reporting sometimes disappointingly low numbers - "If I'd only counted last week...." - is still important in giving a broad picture; and perhaps the birds you might normally have seen will have popped up in another person's garden survey!

This of course is only a 'field study' snap shot, but nevertheless a fun way of taking an interest in one aspect of the wildlife in our own gardens.

Willersey's Birds In Numbers

- A total of 1008 birds were seen, only slightly down on 2022.
- The greatest number reported once again were Goldfinch with 159 (15.8%).
- Followed by House sparrow with 126 (12.5%) and then Blackbird with 109 (10.9%).
- Interestingly, 93% reported seeing a blackbird and 77% mentioned a robin, perhaps two of our most common and much loved garden birds.
- Greenfinch numbers sadly seem to suggest that we may be following the national trend with numbers down from 33 last year to just 18 reported this year.

There were of course other birds not included in the survey which showed up - with these being perhaps the most noteworthy:- 20 blackcaps, both male and female, 12 wrens, 3 fieldfare, 3 pied wagtails, 2 green woodpeckers, 1 greater spotted woodpecker, 1 yellow wagtail, 1 brambling, 1 siskin, 1 bullfinch and with garden visiting raptors too: kite 2, sparrowhawk 1 and buzzard 1.

- 37 different species were recorded in our survey - 6 more than last year.

[Type here]

Despite some of these seemingly high numbers, as many of us know, our birds along with much of our wildlife is in serious trouble. So anything we can do to celebrate and nurture the local wildlife that we currently enjoy must surely be a good thing for all of us to be doing - however small our contribution.

Bob Topp -
January 2023

STRATFORD-UPON-AVON CHORAL SOCIETY

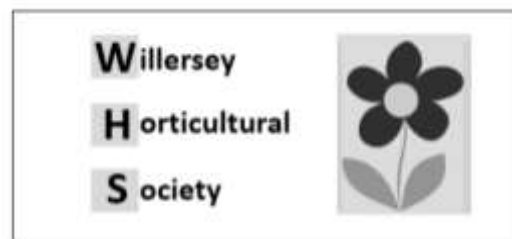
.... GLORIA! on 25th MARCH 2023....

Stratford-upon-Avon Choral Society presents a programme of 'glorious' British music for choir, brass and organ on **Saturday 25th March 2023 at 7.30pm** in Holy Trinity Church, Old Town, Stratford. Music Director Oliver Neal Parker will conduct the Choir, with soprano Heather Wardle, who has previously sung with the Tallis Scholars and Stile Antico, Brass and percussion ensemble from the Regency Sinfonia and Douglas Keilitz, organ. The Choral Society was first formed in 1836 and shares with the Huddersfield Choral Society the accolade of being the oldest choral society in the country.

The programme will include Rutter's exciting *Gloria* (1st perf. 1974), Mendelssohn's *Hear My Prayer* (1st perf. 1845) an exquisite cantata, which includes the famous section 'O for the wings of a dove', two anthems by Elgar – Psalm 29 *Give unto the Lord* and *Spirit of the Lord*, the latter from *The Apostles* (1st perf. 1903) and Parry's grand setting of Milton's 'At a Solemn Music' *Blest Pair of Sirens* (1st perf. 1887).

Tickets for Stratford-upon-Avon Choral Society's 25th March concert, £20 (**adults**) or £10 (**students**) from choir members, Website www.stratfordchoral.org.uk, phone 01789 750704 or at the door on the night if seats available. **Up to two children under 16 are admitted free of charge if accompanied by an adult.**

Further Press Information: Carol Jackson on 01386 841440. Feb 6th 2023
www.stratfordchoral.org.uk. Registered Charity 502020



“Spring Fling”

Saturday 15 April '23
Willersey Village Hall :
10.00 to 12.00

Fed up with the long dark nights and cold temperatures ? Don't despair as Spring is now just around the corner .

We will be holding the “**SPRING FLING**” in the Village Hall on Saturday 15th April 2023 from 10.00 to 12.00. Copies of the 2023 “Show Schedule” listing all the Classes and Categories will be available.....watch out for some new and exciting opportunities to show off your talents at the Summer Show on Monday 28 August 2023.

In addition we are looking to repeat the “just for fun” **POTATO CHALLENGE** for Adults and Children which proved such a popular hit last year.....thank you Bob & Maggie Topp for once again taking the lead on this. Entries will be accepted on a first come first served basis.....last year the spuds sold out incredibly quickly so we recommend that you get to the Hall early !

We will also have various **STALLS** including Art Pad Glass from Offenham, Cards & Items by Nickie, Friends of Willersey School, the WI will have a Stall plus a few more Stalls still to be confirmed.....in addition there will be **TEA, COFFEE**, Soft Drinks and a great choice of **CAKES** and **BISCUITS**.

Any funds raised from the “**SPRING FLING**” will go towards covering the running costs of the 2023 Horticultural Show and also supporting various Projects around the Village. Last year we supported the “Forrest School” initiative plus also the Bulb planting in the Village led by Sandra & Ken Spensley.

We are also planning on holding an Arts & Crafts Exhibition alongside the Horticultural Show – if you are a keen Artist or have other art & craft talents please seek out Peter Kavanagh (pekavter@hotmail.com) for more information.

Mark Bridgeman – Chairperson – Willersey Horticultural Society

Email : Bridgeman757@btinternet.com / Mobile 07976-111906 **20**

Build Outs in Collin Lane
Parish Council Meeting at 7:30pm on
Monday February 20th 2023

The main business of the meeting was to decide on a preferred action to improve the safety of the build outs in Collin Lane and to lobby for its implementation.

. The meeting was attended by our County Councillor Lynden Stowe, Willersey Parish councillors and members of the public. In total 40 people were present.

Recent government road safety protocol now requires all chicanes to have street lighting. The options to be considered were:

- A. Change nothing and have mandatory street lights installed.
- B. Remove the build outs completely.
- C. Remove the eastern one and leave the one at the Nash Rd. Willow Green crossing with speed humps and signage.
- D. Something else.

After much discussion the meeting voted on different courses of action. Almost all those present voted for option C to remove the eastern build out and leave the other in place. A raised platform in the road with sloped sides and dragons teeth road markings would slow traffic and could act as a crossing point. More signage was needed to alert traffic to the village 30mph limit and the pedestrian crossing point. These recommendations would go to the Parish Council and would then be taken up by Lynden Stowe with Gloucestershire County Council.

It is dangerous to stand in the middle of the road, you can get hit by traffic in both lanes.

Guided Walks with the Cotswold Voluntary Wardens



Details of the walks available are described on the website (below). **Please check walk details carefully on the website, including whether booking is necessary. Additional walks may be published on the website.**

<https://www.cotswoldsaonb.org.uk/visiting-and-exploring/guided-walks/>

Signs of Spring - Hayles Walk- Friday 3rd March – Moderate 3hr 6ml

An invigorating walk from Hayles Fruit Farm, via Wood Stanway up the Cotswold escarpment to Stumps Cross and along an old drovers road. We take in the pretty hamlet of Farmcote, with great views before descending the stony track of the Cotswold Way on our return to Hayles.

Start: 10.00am Hayles fruit fram, Hayles, GL54 5PB. Parking £2.50 refundable against purchases in café or shop. OS Map ref: SP 053 297.

Guiting Power to Naunton and Barton - Tuesday 7th March – Moderate 3hr 6ml

A lovely walk from the historic village of Guiting Power. On the Diamond Way to Naunton by the river Windrush. Then onto Barton

and Barton House. Refreshments available after the walk at the Farmers Arms or the café in the old post office. Please bring coffee/snack.

Start: 10.00am Guiting Power village car park or nearby GL54 5TX. OS Map ref: SP 095 246.

[Type here]

Walking the Ways 2 (of 5) - Tuesday 21st March – Moderate 5hr 8.5ml

The second of five circular walks during the year exploring the Wardens' and Windrush Ways. Each is a complete walk, so no need to commit to them all. The Ways run between Winchcombe and Bourton on the Water. Please bring refreshments for mid-morning and picnic lunch stops.

Start: 10.00am Hawling Methodist Chapel in Hawling, GL54 5SZ. Please park considerately in the village. OS Map ref: SP 066 230

The Mill Walk from Withington - Tuesday 21st March – Moderate 3hr 5.5ml

A walk from Withington around this very historic area. Features include a disused railway, neolithic and Roman history sites and stunning views.

Start: 10.00am The Mill Inn at Withington, GL54 4BE. OS Map ref: SP 031 154

A Moreton Triangle - Thursday 30th March – Moderate 3.5hr 7ml

The walk heads off through fields toward Batsford only to skirt the Arboretum and take the path to Bourton-on-the-Hill. Passing through the village the walk then follows the contour past Sezincote to Longborough, The Monarch's Way leads us back to the starting point. The route is picturesque with plenty of views to enjoy; it is also a fairly flat route although in winter months mud may be an issue at points. Take drinks/snack. Refreshments available in Moreton afterwards.

Start: 10.00am Moreton in Marsh War Memorial. Moreton has several car parks and on-street parking. OS Map ref: SP 205 326.

PLEASE use appropriate footwear as some walks may be steep and muddy in places. EASY - Length may vary but terrain is mainly flat (level); MODERATE - includes some hills and rough ground.

PUBLIC NOTICES March 2023

MONDAY KERBSIDE BIN COLLECTIONS.

The next dates for bins are 6th & 20th March 2023.

Please put all bins and bags out by 7.00am.

The Waste Hotline is 01285 623123.

https://publica.force.com/sfsites/c/resource/CDC_Calendars/Mon_2.pdf

Please note that the situation on these can change at any time if say the weather is bad. Just leave your bins out for collection later. (Food waste every week.)

PARISH COUNCIL The office is on the corner of the Village Hall. Open every Monday from 10.00am to noon. Outside these hours, please contact the clerk on 01386 853635 or email willerseyparishcouncil@btconnect.com

WILLERSEY VILLAGE HALL To hire the hall please telephone Annie & Bill Payne 01386 858368, or email willerseyhall@btinternet.com or see <https://www.willerseyhall.co.uk/>

METHODIST COMMUNITY ROOM HIRE Tel: Penny Ingles 01386 853306.

The **MOBILE POST OFFICE**

Visits Willersey on **Friday at The Bell Inn 12:45 to 14:45.**

For Lloyds customers only, their Mobile Bank visits Broadway alternate Wednesdays 10:00 to 12:00. There is a Post Office in Broadway Co-Op.

BROADWAY SURGERY is on Station Road WR12 7DE 01386 853651 and 01386 858136.

NEAREST LIBRARY

The nearest library is in Broadway.

Open Mon & Wed, 9:30am – 4:30pm. Saturday 9:30 – 1pm 01905 822722

COTSWOLD FRIENDS

Anybody who wishes to have transport for hospital and medical appointments should ring the Cotswold Friends Help Centre: transport section 01608 651115. This telephone is manned from 09:30-15:30 Monday to Friday. At other times there is an Answerphone.

SERVICES TELEPHONE NUMBERS

National Rail Enquiries	08457 48 49 50 or 03457 48 49 50
National Bus Traveline	0871 2002233
Hedgehog	01386 841849
N. N. Cresswell to Evesham	01386 48655 for route R4
Diamond Bus to Stratford-upon-Avon	01527 813120 for route 1
Pulhams Coaches to Cheltenham	01451 820369 for route 606

Bus timetables for Gloucestershire are at www.easytraveling.org.uk/gcc/ and on the Willersey website at www.willersey.org/transport.htm#bus

Contact numbers for Breakdown of Services & Police

Electric Power Faults - 0800 328 1111 or 105. Gas Emergency – 0800 111 999
Floodline – 0845 988 1188. Severn Trent. Sewage – 08007 83444
Thames Water - Water Supply – 0800 980 8800
Police – Telephone 101 www.gloucestershire.police.uk

© Willersey and Saintbury Village News 2023