



Wales and West House
Spencer Close
Celtic Springs
Newport NP10 8PZ

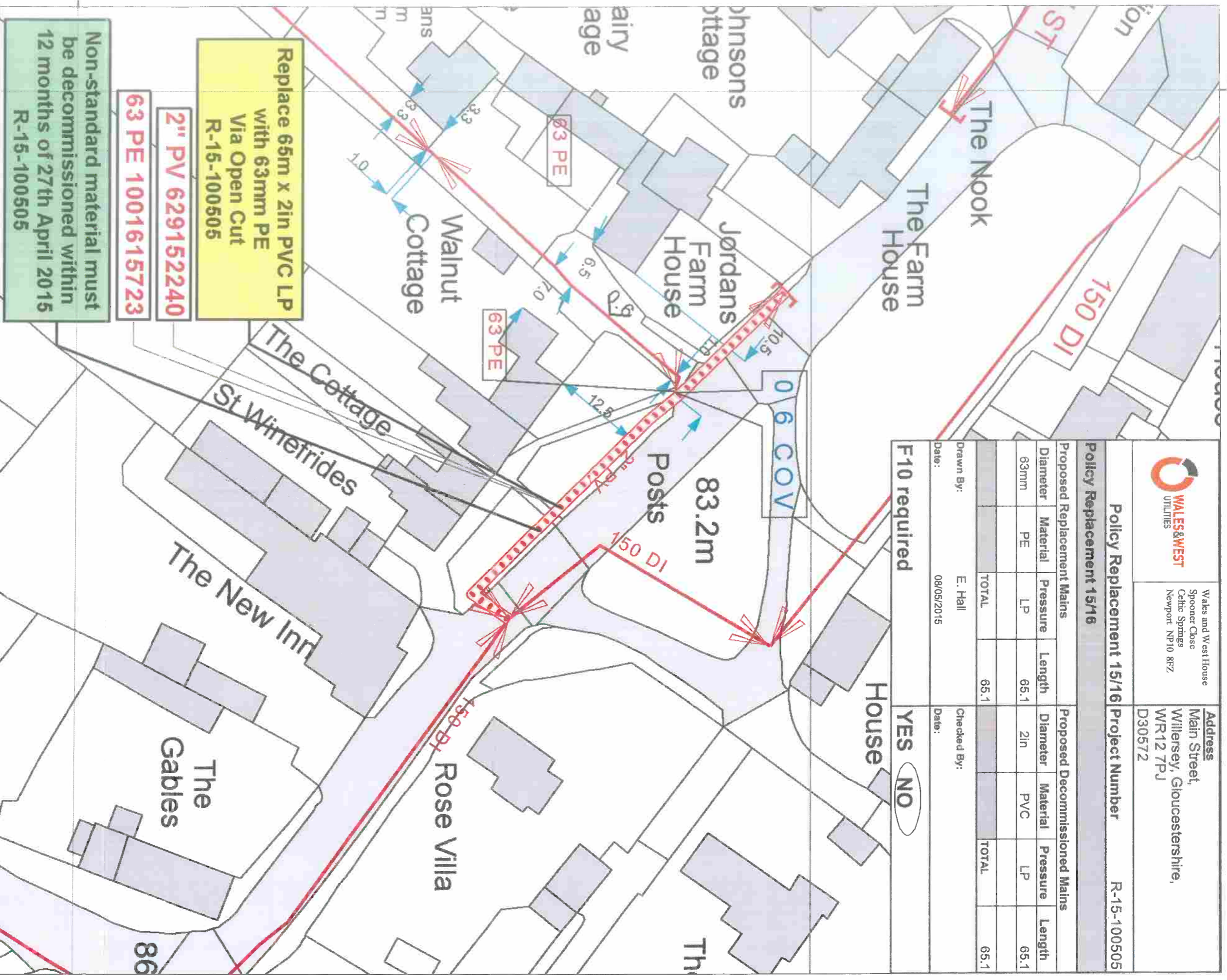
Address
Main Street,
Willesley, Gloucestershire,
WR12 7PJ
D30572

Policy Replacement 15/16 Project Number R-15-100505

Proposed Replacement Mains				Proposed Decommissioned Mains			
Diameter	Material	Pressure	Length	Diameter	Material	Pressure	Length
63mm	PE	LP	65.1	2in	PVC	LP	65.1
			TOTAL				TOTAL
			65.1				65.1

Drawn By: E. Hall
Date: 08/05/2015
Checked By:
Date:

F10 required **YES** **NO**



Replace 65m x 2in PVC LP with 63mm PE Via Open Cut R-15-100505

2" PV 629152240

63 PE 1001615723

Non-standard material must be decommissioned within 12 months of 27th April 2015 R-15-100505

R-15-100505 Equipment	Street	Risk Score (01/15)	Action	Pipe Category	Diameter	Material	Pressure	Length
3000952512	MAIN STREET - 9401518							
3000952514	Main Street		Lay	Tier 1 Policy	63mm	Polyethylene	LP	65.1
3000952513	Main Street		Abandon	Tier 1 Policy	2in	PVC	LP	65.1

TITLE : R-15-100505 - Main Street, Willesley, Gloucestershire, WR12 7P

SCALE: 1:500
USER ID: Ehal
DATE: 08/05/2015
PROJECT PLAN
GRID REFERENCE: Easting : 41084 Northg : 239476

Some examples of Plant Items:
Valve Depth of Cover Syphon Diameter Change Material Change

Low Pressure
Medium Pressure
High Pressure
Intermediate Pressure

0 5 10 20 Meters

The plan shows those pipes owned by Wales & West Utilities or the relevant Gas Distribution Network in their roles as Licensed Gas Transporters (GT). Gas pipes owned by other GTs, or otherwise privately owned, may be present in this area. Information with regard to such pipes should be obtained from the relevant owners. The information shown on this plan is given without warranty, the accuracy thereof cannot be guaranteed. Service pipes, valves, syphons, stub connections, etc. are not shown but their presence should be anticipated. No liability of any kind whatsoever is accepted by Wales & West Utilities, the relevant Gas Distribution Network, or their agents, servants or contractors for any error or omission. Safe digging practices, in accordance with HS(G)47, must be used to verify and establish the actual position of mains, pipes, services and other apparatus on site before any mechanical plant is used. It is your responsibility to ensure that this information is provided to all persons (either direct labour or contractors) working for you or near gas apparatus. The information included on this plan should not be referred to beyond a period of 28 days from the date of issue.

Wales and West Utilities Ltd GIS
Reproduced by permission of Ordnance Survey on behalf of HMSO. (C) Crown copyright and database right 2015. All rights reserved. Ordnance Survey Licence number 0100044308.